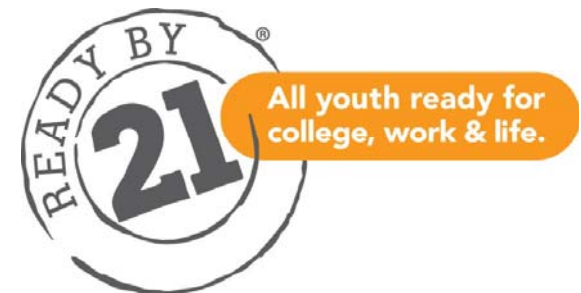


RB21 | RBA

Ready by 21 | Results-Based Planning for Communities Using Ready by 21 Standards and Strategies

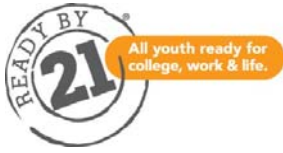
Tuesday, September 21, 2010
2:00 PM - 3:00 PM EDT

Presented by Results Leadership Group and The Forum for
Youth Investment



WELCOME AND OVERVIEW

Janay Queen, RLG, moderator
Karen Pittman, Forum, presenter
Karen Finn, RLG, presenter
Merita Irby, Forum, presenter



Goals (Agenda)

- ❑ What is Ready by 21[®]? What type of planning does it require? [Pittman]
- ❑ How can Results-Based Accountability[™] Help? [Finn] *The Rb21 Adaptation [Irby]*
- ❑ How can the RBA Scorecard Help? [Finn] *The Rb21 Adaptation [Irby]*
- ❑ What questions do you have? [Queen]

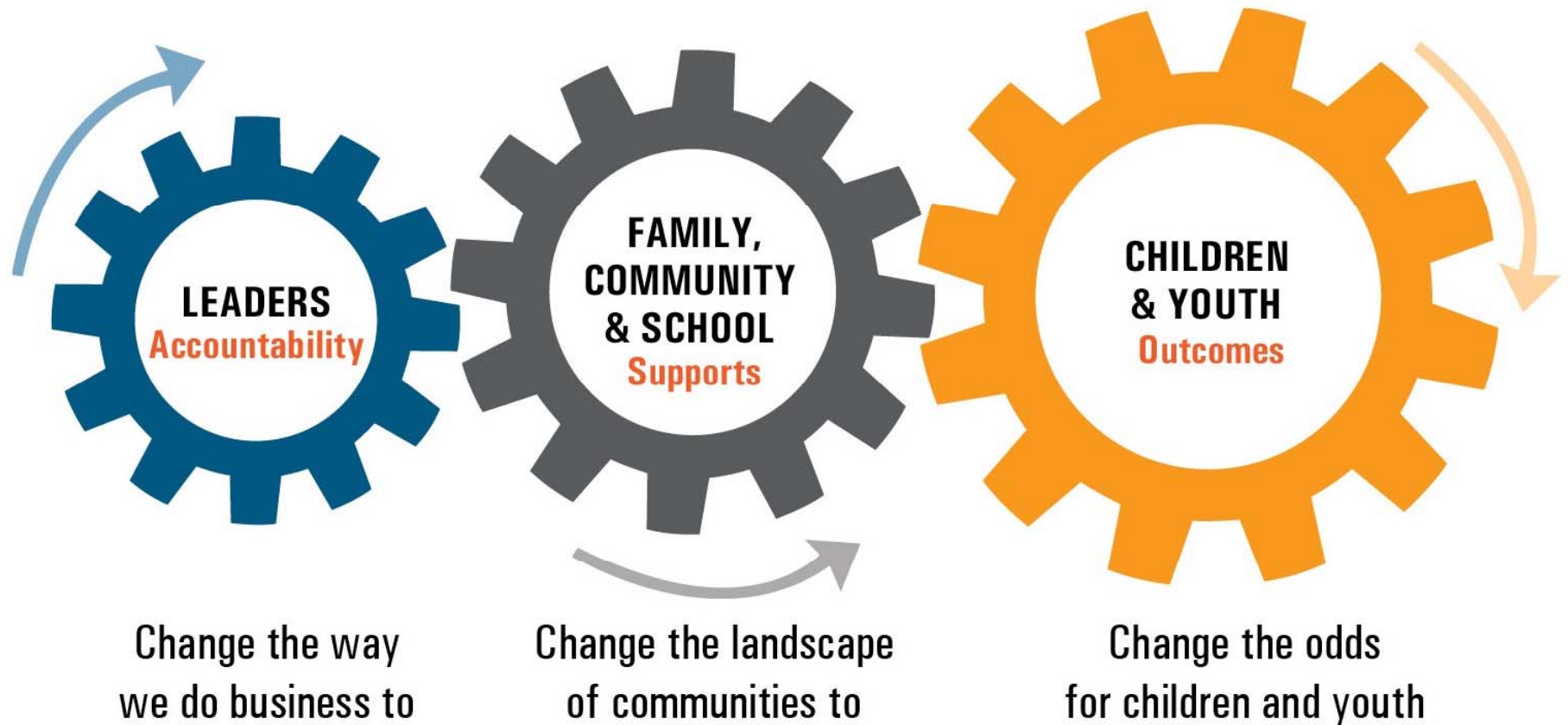
READY BY 21
**WHAT IS IT? WHAT TYPE OF
PLANNING DOES IT REQUIRE?**

Karen Pittman, President and CEO
The Forum for Youth Investment



All youth ready for college, work & life.

Ready by 21: Changing the Odds for Youth by Changing the Way We Do Business





Ready by 21 Assertions

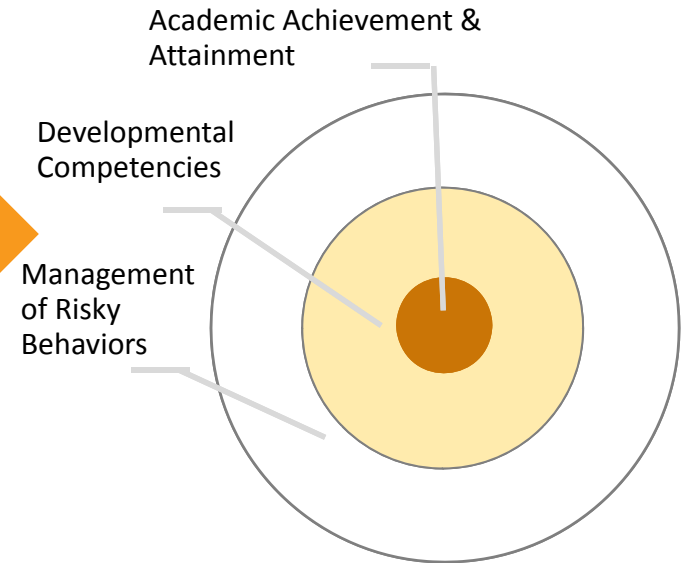
Readiness for and success in college, work and life are determined by more than academic success in high school. Therefore:

- **1. Investments in readiness** should start before birth and continue into the mid-twenties.
- **2. Indicators of readiness** should include not only measures of academic success and risky behaviors and circumstances, but also measures of developmental competencies...
- **3. Improvements in readiness** require improvements in the settings and systems where young people spend their time.
- **4. The capacity for improvement** rests within the community's leaders – individuals from youth and family members to volunteers to elected officials who regularly take the initiative to spark change.



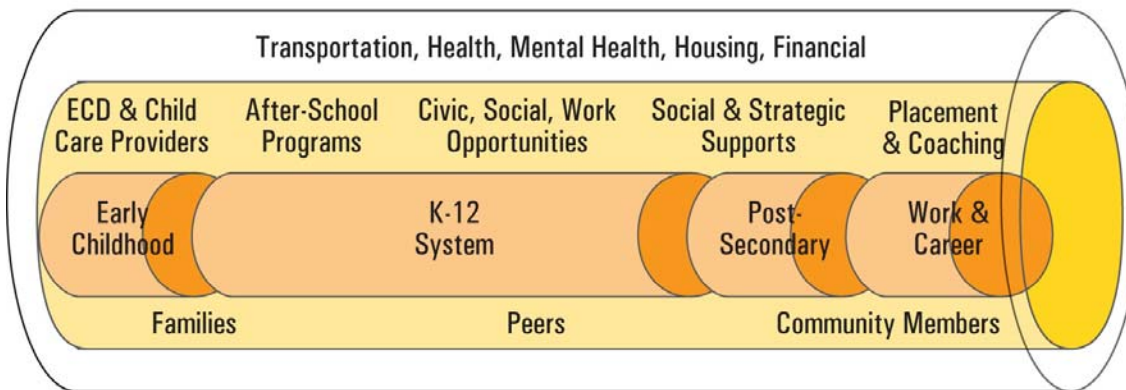
Ready by 21 Graphics & Terms

1. "Cradle to career" investments

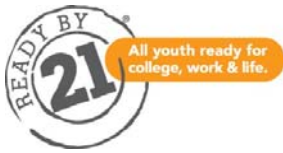


3. Improvements across systems and settings

The Insulated Education Pipeline

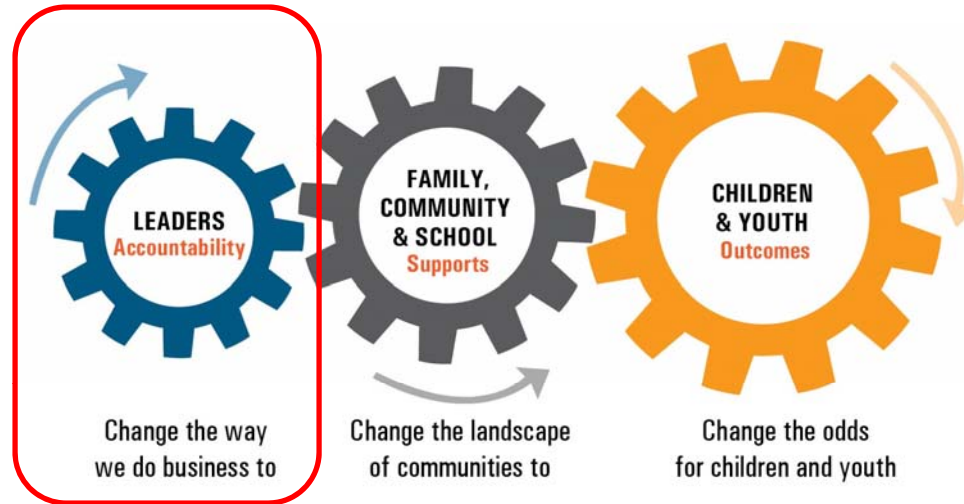


2. Balanced Indicators along the continuum

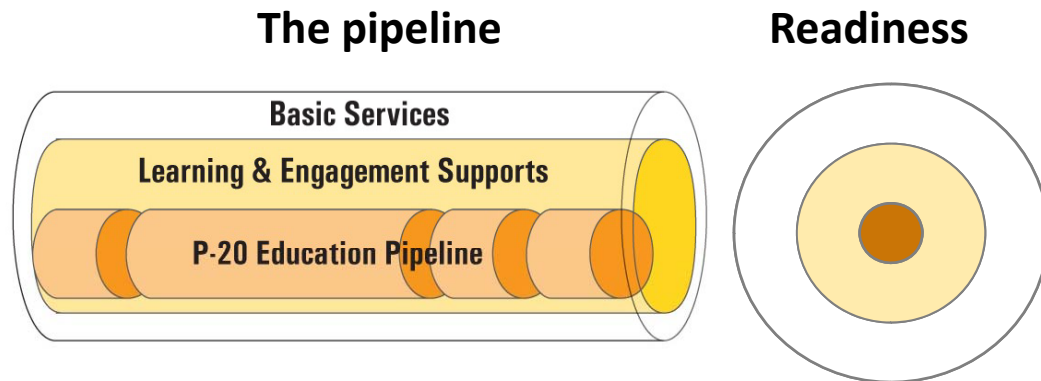


Ready by 21 Graphics & Terms

4. Powerful Solutions for Passionate Leaders



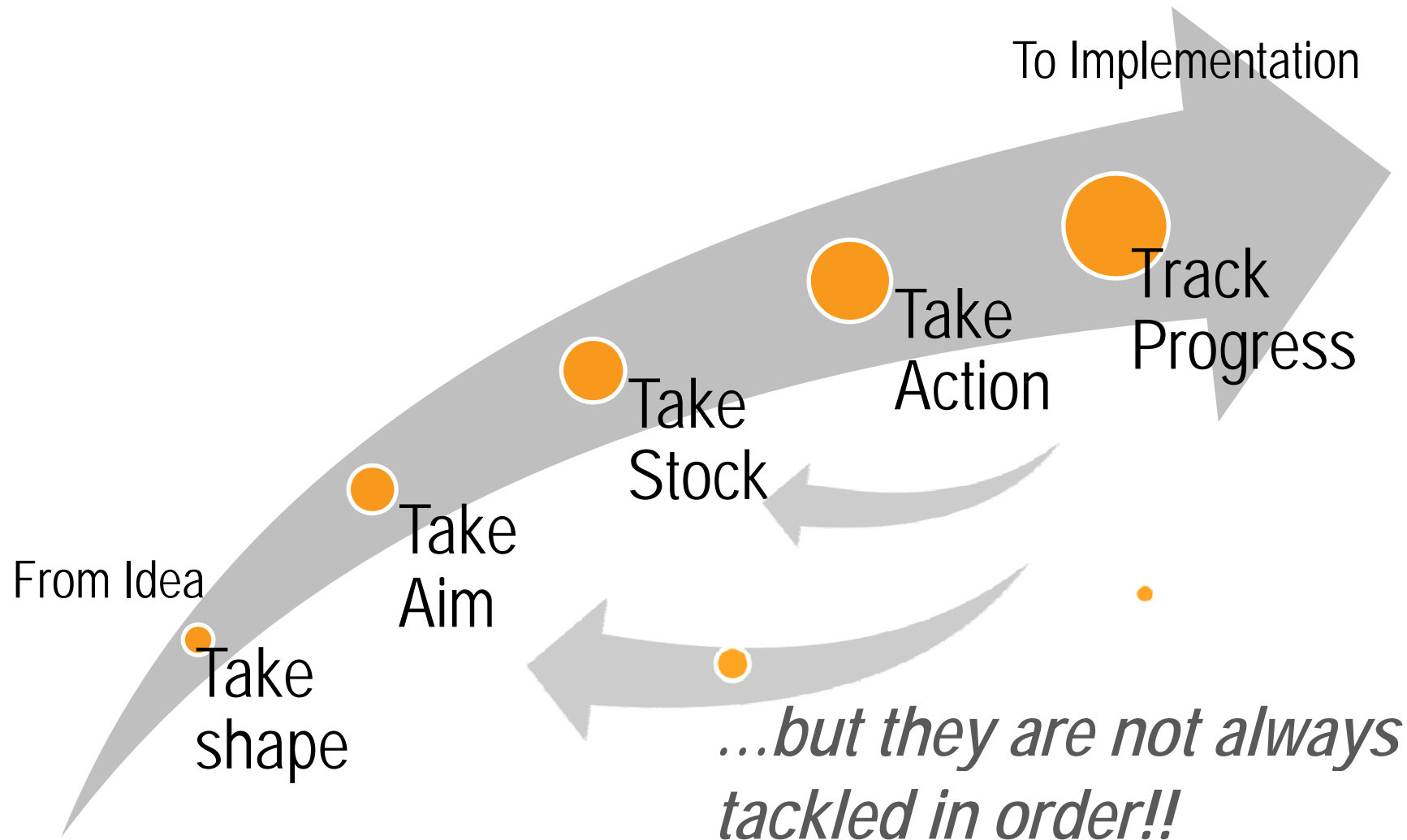
- Standards and Strategies: The 4 B's**
- Broader Partnerships***
- Bigger Goals***
- Better Data and Planning***
- Bolder Strategies***



Ready by 21 Partners Meets leaders where they are, Challenges them to do more, Helps them get further faster...

Build Broader Partnerships	Set Bigger Goals	Use Better Data & Information for Decision-making	Implement Bolder Strategies
<ul style="list-style-type: none"> <input type="checkbox"/> Involved key stakeholders? <input type="checkbox"/> Strengthened, linked & aligned coalitions and networks? <input type="checkbox"/> Created or supported the development of an overarching leadership council? 	<ul style="list-style-type: none"> <input type="checkbox"/> Established goals for children & youth that really reflect what we know about how they develop and learn? <input type="checkbox"/> Defined the essential supports needed in order to establish clear goals for all families, settings & systems? 	<ul style="list-style-type: none"> <input type="checkbox"/> Adopted a data-driven decision-making process? <input type="checkbox"/> Identified & filled information and data gaps and connected data across systems and levels? <input type="checkbox"/> Brought the best information about what works into the decision-making process? 	<ul style="list-style-type: none"> <input type="checkbox"/> Improved the quality, reach & coordination of programs, services and systems? <input type="checkbox"/> Engaged youth & families as change makers? <input type="checkbox"/> Aligned policies & prioritized the use of resources? <input type="checkbox"/> Increased public demand for quality supports & clear results?

These tasks have a logical flow...



Ready by 21 Brings a Big Picture Approach to RBA Planning



SHAPE. Select planning group carefully to represent all stakeholders. Anticipate the need to make recommendations for modifying and aligning permanent coordinating structures.

AIM. Define desired results for children and youth; define common standards for systems and settings.

ACTION. Identify action areas that are linked to multiple results. Remember, taking shape and taking stock can be actions.

Take shape

Take Aim

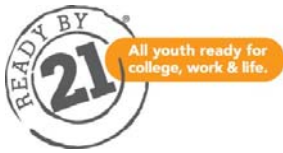
Take Stock

Take Action

Track Progress

STOCK. Select a balanced set of indicators that reflect the age/outcome continuum and performance measures for standards. Identify potential partners and map current capacities.

PROGRESS. Track progress in ways that link effort to outcomes.

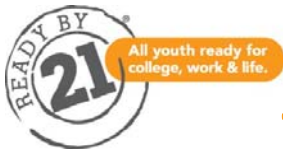


Rb21: Big Picture ways to set goals, select strategies and track progress

		Pre-K 0-5	School-Age 6-10	Middle School 11-14	High School 15-18	Young Adults 19-21+
<i>Ready for College</i>	LEARNING	Red	Yellow	Red	Red	Yellow
<i>Ready for Work</i>	WORKING	Green	Green	Red	Yellow	Yellow
<i>Ready for Life</i>	THRIVING	Red	Yellow	Yellow	Green	Green
	CONNECTING	Yellow	Yellow	Green	Yellow	Red
	LEADING	Yellow	Green			

		Pre-K 0-5	School-Age 6-10	Middle School 11-14	High School 15-18	Young Adults 19-21+
<i>Ready for College</i>	LEARNING	Green	Yellow	Yellow	Yellow	Green
<i>Ready for Work</i>	WORKING	Green	Green	Yellow	Green	Yellow
<i>Ready for Life</i>	THRIVING	Yellow	Yellow	Yellow	Green	Green
	CONNECTING	Yellow	Yellow	Green	Yellow	Yellow
	LEADING	Yellow	Green	Yellow	Yellow	Yellow

**Shifting
Red to Yellow,
Yellow to
Green**



Ready by 21 National Partnership.

Tools. Training. Technical Assistance. Quality Assurance.



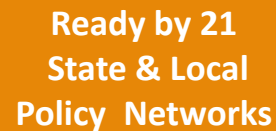
**Founder &
Managing Partner**



Signature Partner



NATIONAL CONFERENCE OF STATE LEGISLATURES



Mobilization Partners



Technical Partners



Ready by 21 Results

Decision makers need to increase their capacity and shared commitment to:

- **define values, vision & goals**
- **ensure adequate and aligned resources**
- publish, detailed coordinated action plans
- have accurate information on the status of children, youth, family, school community supports
- provide annual progress reports
- Engage and empower providers, families, youth, citizens
- implement scalable strategies for improving community supports

Formal and Informal Providers need to increase their capacity and commitment to:

- **provide high quality supports and instruction**
- **increase reach and retention, especially of underserved populations**
- document impact
- manage staff and fiscal resources effectively
- coordinate their efforts with others to ensure that children and youth realize their potential.
- actively engage and empower youth & families
-

Children and youth need to increase their capacity and commitment to:

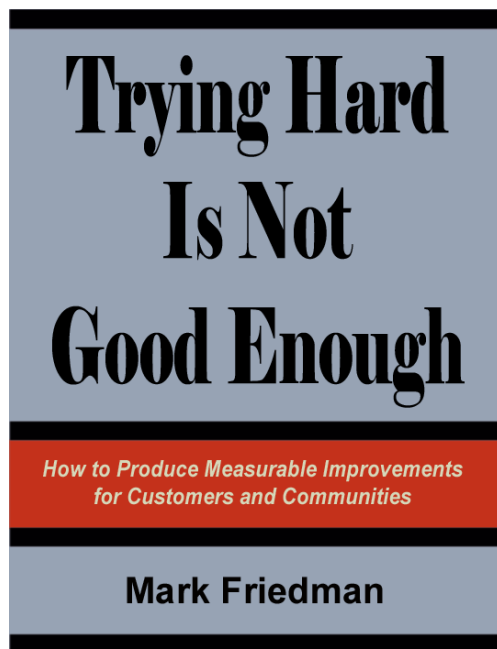
- **graduate from high school**
- **manage risky behaviors & circumstances**
- be responsible and resourceful
- have high expectations for themselves and others
- use their voices and skills
- find their passion or spark
- build the competencies needed to succeed in college, work and life
- monitor their own progress
- seek support and guidance from formal and informal providers

RESULTS-BASED ACCOUNTABILITY™

Karen Finn
Partner, Results Leadership Group



What is Results-Based Accountability™ (RBA)?



A disciplined way of thinking and taking action that communities can use to improve the lives of children, youth, families and the community as a whole.

It can also be used to improve the performance of programs, agencies and service systems.

MEASURABLE RESULTS FOR CLIENTS AND COMMUNITIES



Two Key Principles for Achieving Measurable Community Results

1. Starting with ends, working backwards to means
2. Data-driven, transparent Decision Making

MEASURABLE RESULTS FOR CLIENTS AND COMMUNITIES

RBA in a Nutshell



2-3-7

2 - Kinds of Accountability

- Population accountability
- Performance accountability

3 - Kinds of Performance Measures.

- How much did we do?
- How well did we do it?
- Is anyone better off?

7 - Questions from ends to means in less than an hour: Turn the Curve™ Thinking

MEASURABLE RESULTS FOR CLIENTS AND COMMUNITIES

RBA distinguishes between two kinds
of Accountability:



Population Accountability

about the well-being of

WHOLE POPULATIONS

Ex. Communities – Cities – Counties – States - Nations

Performance Accountability

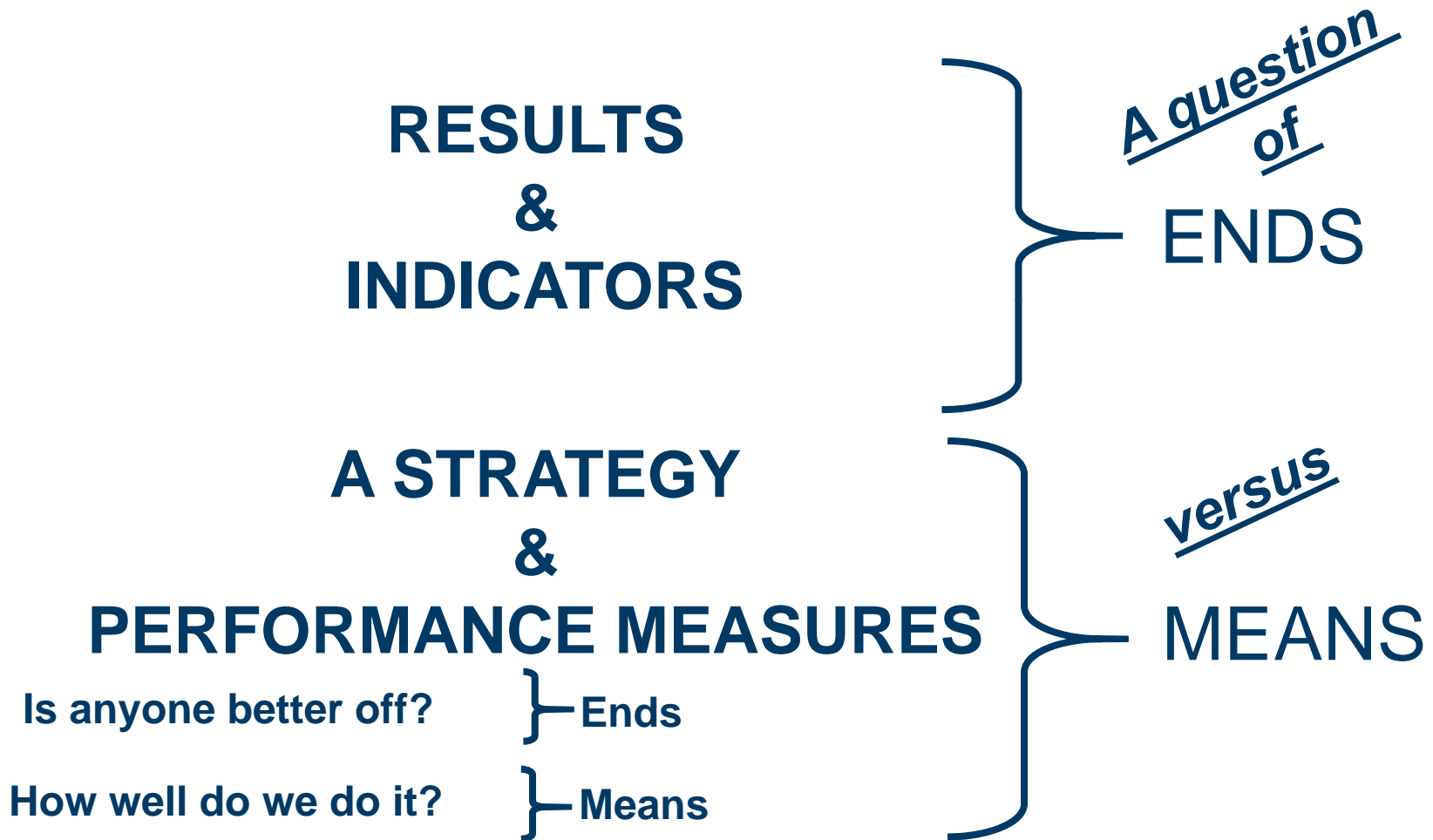
about the well-being of

CLIENT POPULATIONS

Ex. Programs – Agencies – and Service Systems

MEASURABLE RESULTS FOR CLIENTS AND COMMUNITIES

Why Distinguish Population from Performance Accountability?



MEASURABLE RESULTS FOR CLIENTS AND COMMUNITIES

Turn the Curve Thinking™



All youth ready for college, work & life.



Take Aim

Take Stock

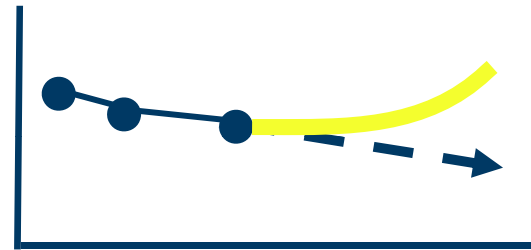
Take Action

Action Plan

Turn-the-Curve Thinking™: **Talk to Action**

Result:

Indicator
Baseline



Story behind the baseline

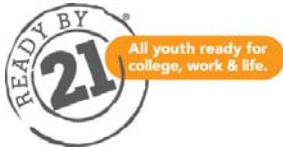
Partners *(with a role to play in turning the curve)*

What Works

Strategy (w/ Budget)

READY BY 21 RESULTS BASED ACCOUNTABILITY

Merita Irby, Executive Vice President and
Chief Program Officer
The Forum for Youth Investment

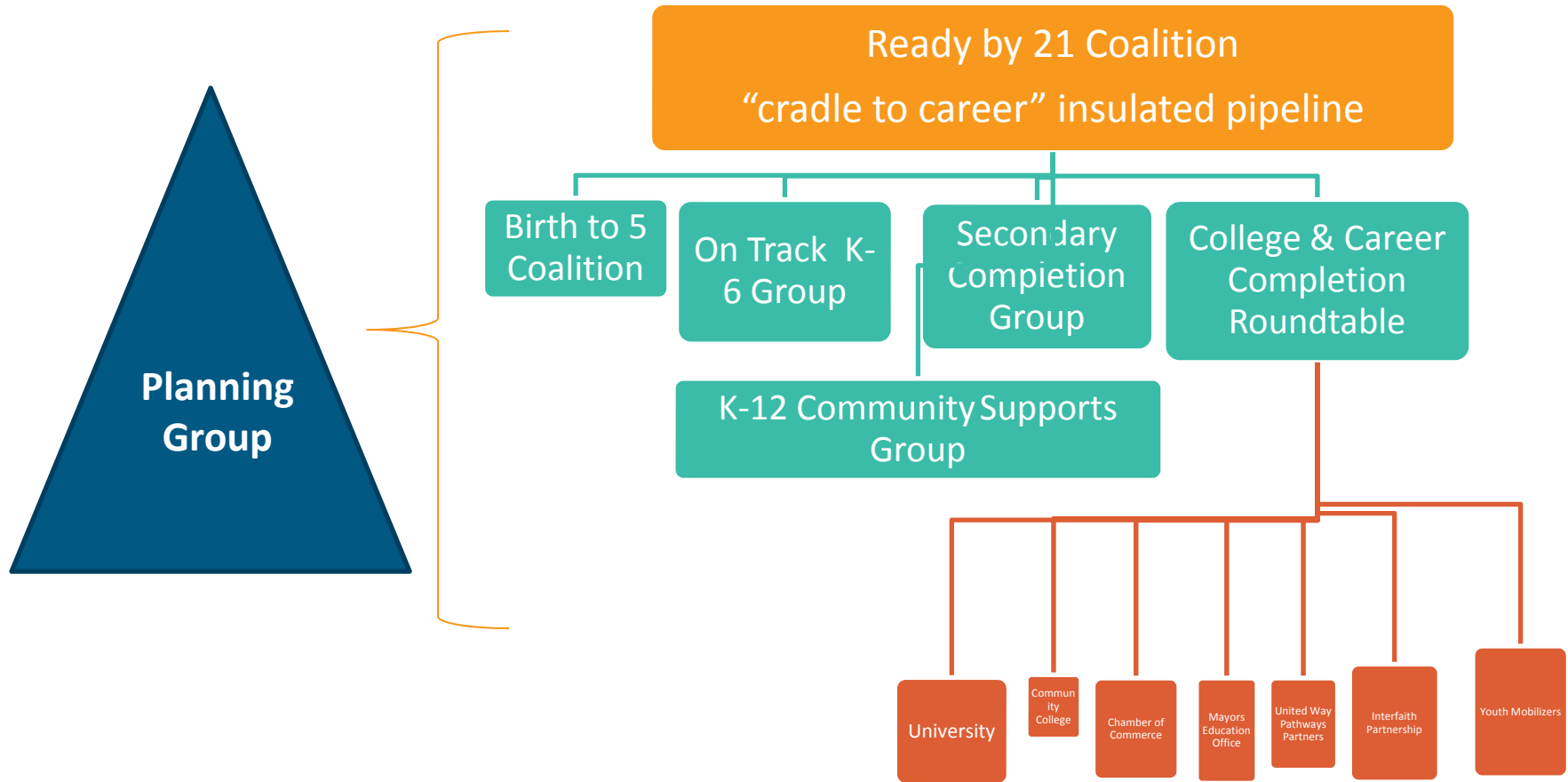


Rb21 | RBA Planning Facilitation

- Developed in response to field experience with state and local leaders interested in blending Rb21 and RBA approaches
- Resolves practical questions re how to adhere to Rb21 standards within RBA (e.g. working with multiple indicators)
- Facilitation guide jointly development by Irby and Finn.
- Use of RBA tools in Rb21 trainings and facilitations approved by Mark Friedman
- Training and planning facilitation services available to those familiar with either RBA or Rb21



Linking Planning to Permanence





Linking Indicators to Action Areas

<p>YOUTH READY BY 21 ➤</p>	<p><i>A Five-Year Action Agenda for Maryland</i> ➤</p>	<p>Presented to the Children's Cabinet by the Ready by 21 Planning Team</p> <p>October 2007 ➤</p>
---	--	---





Maryland Ready by 21 Action Agenda

**Desired
Results:**

Indicators:

Action Areas:

Ready for
college

Ready for
work

Ready for
Life



Maryland Ready by 21 Action Agenda

Desired Results:

Ready for college

Ready for work

Ready for Life

Indicators:

- Educational attainment
- Employment
- Health Care Coverage
- HIV/AIDS rate
- Deaths by Injury rate
- Arrests

Action Areas:



Maryland Ready by 21 Action Agenda

Desired Results:

Ready for college

Ready for work

Ready for Life

Indicators:

- Educational attainment
- Employment
- Health Care Coverage
- HIV/AIDS rate
- Deaths by Injury rate
- Arrests

Action Areas:

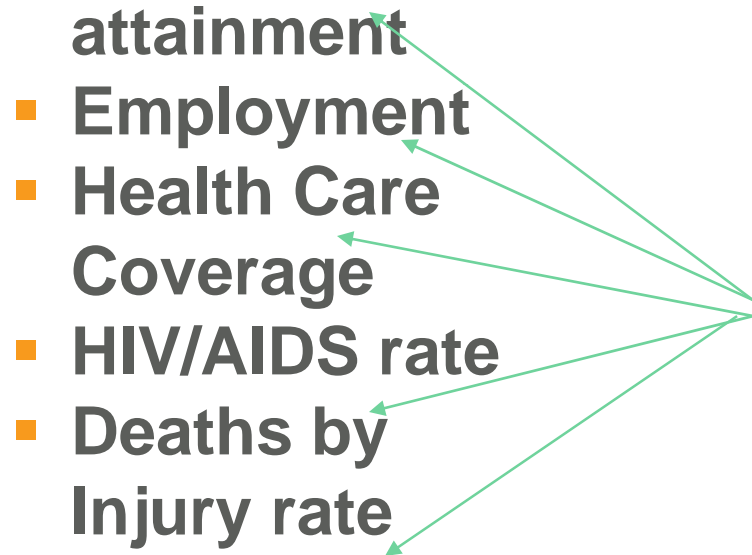
Competent, Caring Adults

Accessible, Affordable Housing

Access to Health Care

Pathways to Education and Employment

Equal Treatment Under the Law





Maryland Ready by 21 Action Agenda

Desired Results:

Ready for college

Ready for work

Ready for Life

Indicators:

- Educational attainment
- Employment
- Health Care Coverage
- HIV/AIDS rate
- Deaths by Injury rate
- Arrests

Action Areas:

Competent, Caring Adults

Accessible, Affordable Housing

Access to Health Care

Pathways to Education and Employment

Equal Treatment Under the Law



Maryland Ready by 21 Action Agenda

Desired Results:

Ready for college

Ready for work

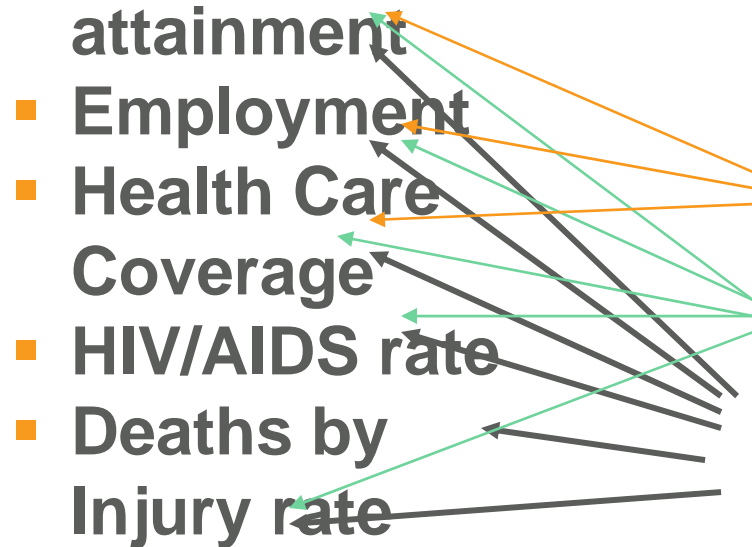
Ready for Life

Indicators:

- Educational attainment
- Employment
- Health Care Coverage
- HIV/AIDS rate
- Deaths by Injury rate
- Arrests

Action Areas:

- Competent, Caring Adults
- Accessible, Affordable Housing
- Access to Health Care
- Pathways to Education and Employment
- Equal Treatment Under the Law



RBA RESULTS SCORECARD: READY BY 21 EXAMPLE

Karen Finn

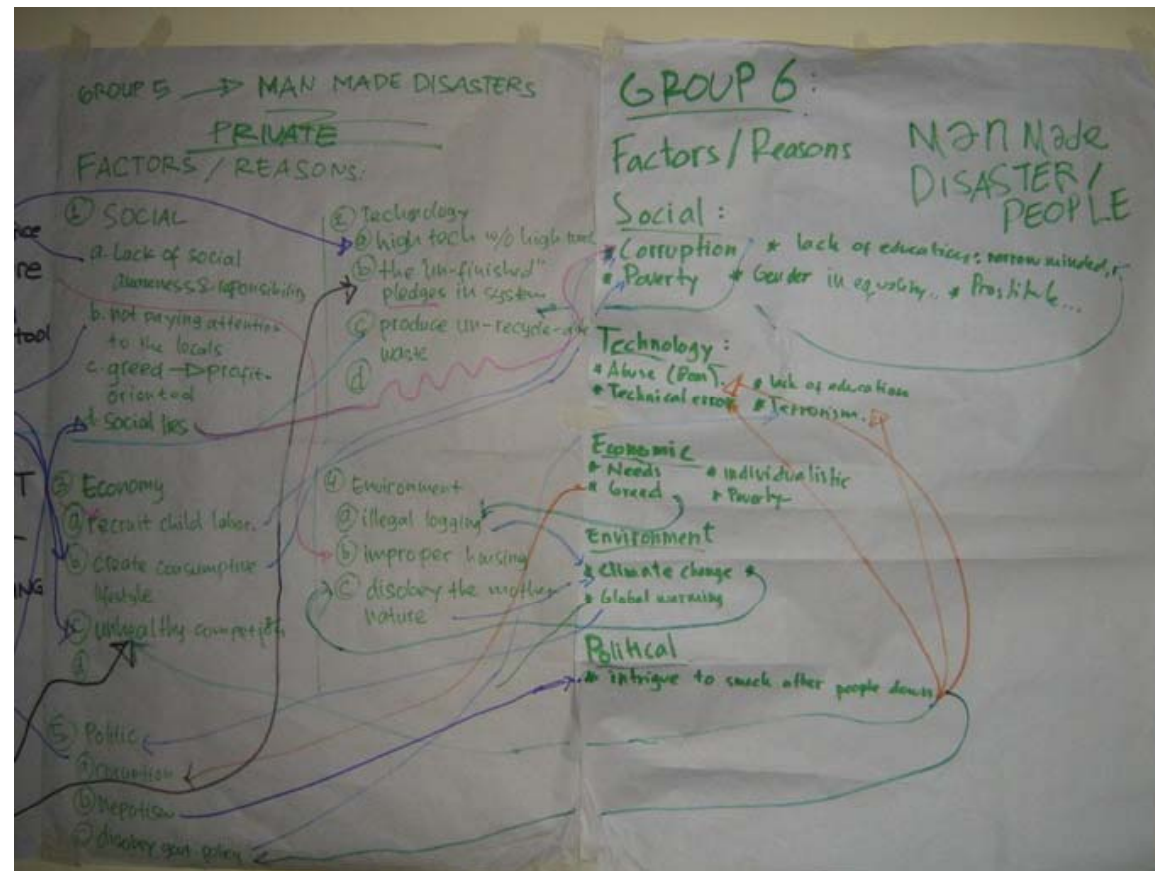


All youth ready for college, work & life.

Even in a perfectly facilitated planning process with lots of great ideas and flipcharts on the walls.....



What percent of this information is retained and used 60 days later?



Planning Documents Are Not Enough



M.B.B.D.

**Managing
By
Big
Documents**

Doesn't Work!

- Too big for most people to read or regularly review
- Yet without enough details for most partners
- Overwhelming, without clear pathway for action
- Static (PDF or Paper)



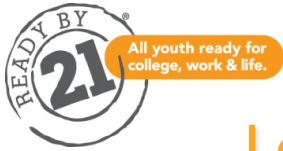
Are meetings the only way to communicate?





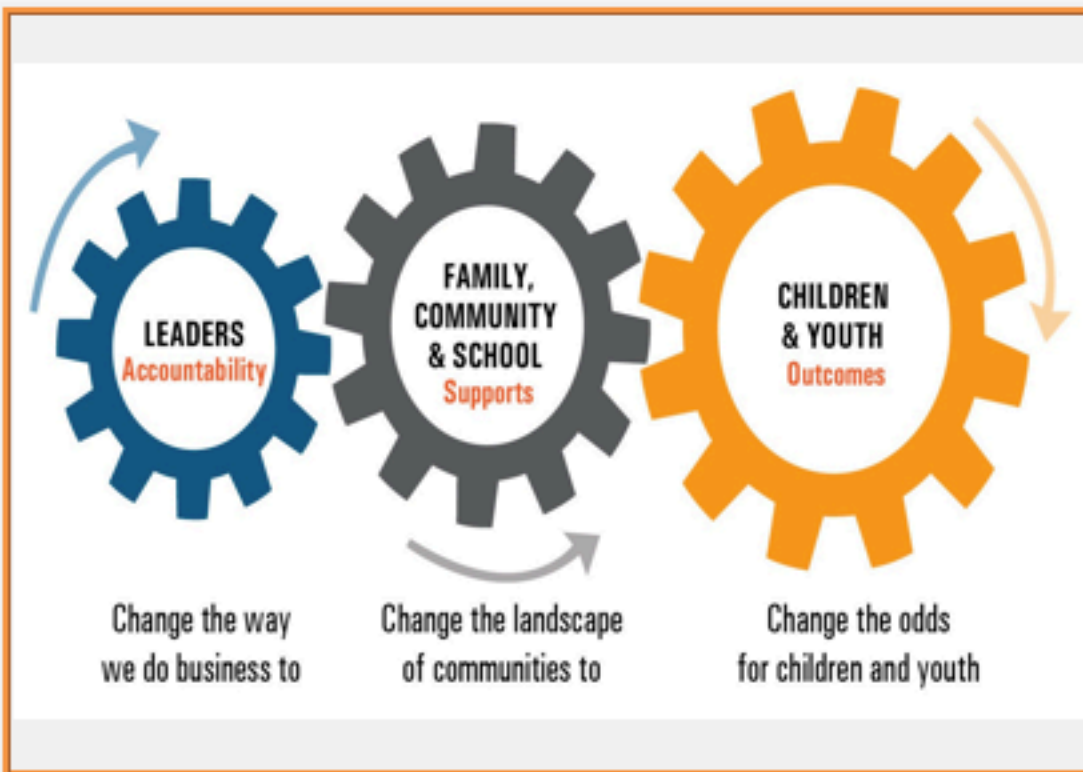
A Better Way: RBA Results Scorecard™!

- Supports shared accountability for results as well as program performance accountability for customer results;
- Connects stakeholders in a single, interactive network;
- Integrates with case management and data collection software (e.g., CSG, nFocus);
- Facilitates transparency and rigorous use of data;
- Accelerates getting from talk to action (“rapid data”); and
- Promotes accountability for investments in programs leading to improved community-wide results.



Let's Take a Look at Five Key Features of the Results Scorecard:

- Home Page
- Children and Youth Outcomes Scorecard
- Family and Community Supports Scorecard
- “Turn the Curve” Screen
- Program View



Welcome to the Ready by 21 Scorecard

Improving outcomes for children and youth requires the commitment of dozens of organizations from multiple sectors to align and improve what they do to achieve a greater impact. *The Rb21 Scorecard is designed to bring precision to both the planning and performance improvement efforts* of the community as a whole, and of the organizations within it.

The Rb21 Scorecard is the result of a partnership between Results Leadership Group and the Forum for Youth Investment. *It combines the Ready by 21 principles and frameworks with Results-Based Accountability (TM).*

The Rb21 Scorecard can be customized to meet your organization and community needs. Once you create your own Scorecard, this welcome message will be replaced by a message from your managing coalition or leadership group.

FOR MORE INFORMATION ON COMMUNITY PARTNERS, CLICK HERE

the forum
FOR YOUTH INVESTMENT

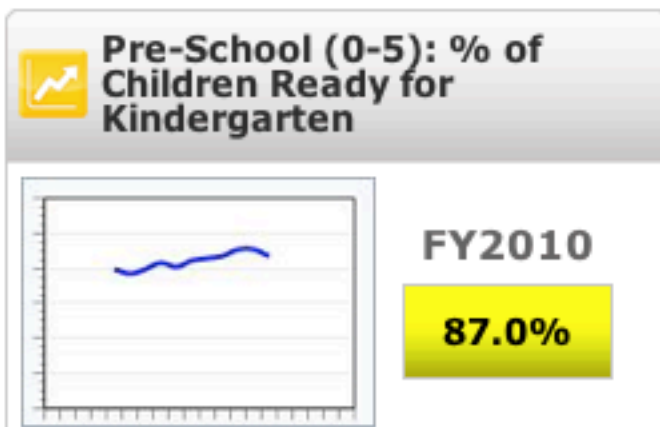
Thanks for your partnership!

Karen Pittman
Co-Founder, President and Chief Executive Officer of the Forum

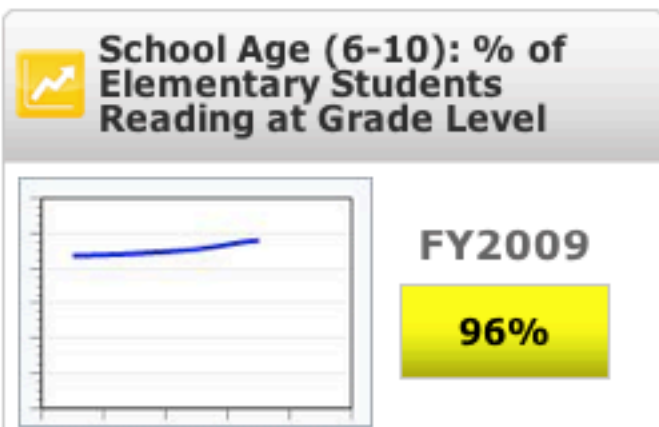
Merita Irby
Co-Founder, Executive Vice President and Chief Program Officer of the Forum

Featured Data Tablet

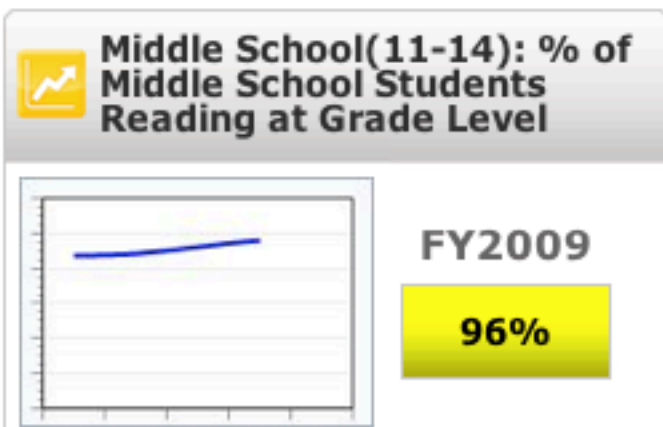
Print Select



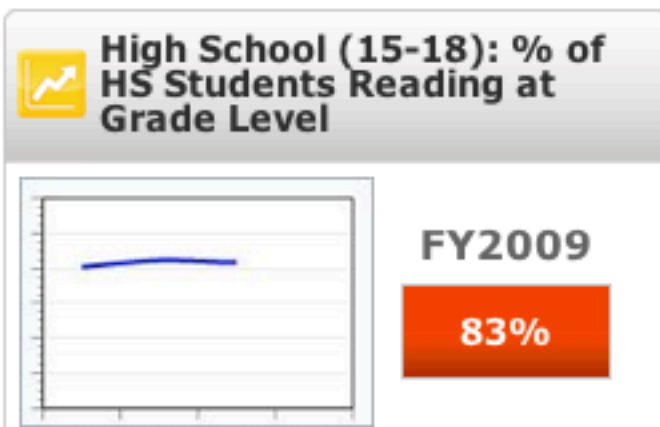
Story Behind the Curve
The trend is improving because: More childcare programs have met accreditation standards. More work still



Story Behind the Curve
The trend is improving due to increased efforts by community partners to ensure students have resources and opport



Story Behind the Curve
The trend is improving due to increased efforts by community partners to ensure students have resources and opport



Story Behind the Curve
Culture of Facebook, Twitter and Text messaging - everything is short hand Movies replacing books Limited exposu

Child and Youth Outcomes Scorecard

[Edit Mode](#) |
 [Print](#)

Expand All | Collapse All

Scorecards: Child and Youth Outcomes Scorecard

Children and Youth Outcomes

Name	Prior Period	Current Value	Change	Target Value	Most Recent Period	Comments/ Projects
READY FOR COLLEGE: Children and Youth Are Lifelong Learners						
READY FOR COLLEGE: 1: % of Children Ready for Kindergarten	91.0%	87.0%	↓ 1	100.0%	FY2010	
READY FOR COLLEGE: 2: Graduation Rate	91.0%	89.0%	↓ 1	95.0%	FY2009	
READY FOR COLLEGE: 3: % Foster Youth in Higher Ed or Training	51.0%	54.0%	↑ 3	75.0%	FY2009	
READY FOR COLLEGE: 4: % of Young Adults in College	72.0%	73.0%	↑ 1	75.0%	FY2009	
READY FOR WORK: Children and Youth Have Knowledge and Skills for the 21st Century						
READY FOR WORK: 1: % Reading at Grade Level (all ages)	89%	91%	↑ 2	90%	FY2009	
READY FOR WORK: 2: % of Young Adults with a 2-year degree or more	74.0%	65.0%	↓ 1	80.0%	FY2008	
READY FOR LIFE: Children and Youth Are Healthy and Make Healthy Choices						
READY FOR LIFE: Obesity Rates (all ages)	16.8%	18.3%	↑ 2	0.0%	FY2009	
READY FOR LIFE: Teen Pregnancy Rate	3.0%	4.5%	↑ 1	0.0%	FY2009	
READY FOR LIFE: % Suicide Attempts & Successes	1.1%	0.7%	↓ 2	0.0%	FY2009	

Home Start Again
 Scoreboard Data Driven Decisions
 Reports Data & Projects
 Scorecard Builder Organize Data
 Administration Users, Data Import, Set up

Ready for College: Entering School Ready to Learn

Edit Mode
 Make Default
 Print

Expand All | Collapse All

Scorecards: Ready for College: Entering School Ready to Learn

- Children and Youth Outcomes
- Family and Community Support

Name	Prior Period	Current Value	Change	Target Value	Most Recent Period	Comments/ Projects
<input checked="" type="checkbox"/> Pre-School (0-5): Health Caring Adults						
Pre-School (0-5): Healthy Caring Adults	93.0%	92.0%	1	95.0%	FY2009	
<input checked="" type="checkbox"/> Pre-School (0-5): Access to Health Care						
Pre-School (0-5): Health Coverage Rate 🔍	87.0%	82.0%	2	95.0%	FY2009	
<input checked="" type="checkbox"/> Pre-School (0-5): Accredited childcare programs						
Pre-School (0-5): % of accredited child care programs (Family Based & Center Based)	6.3%	6.3%	● 0	0.0%	Sep FY2010	



READY FOR COLLEGE: Children and Youth Are Lifelong Learners

Display Settings



READY FOR COLLEGE: 1: % of Children Ready for Kindergarten



Edit



Print



Time Period	Actual Value
FY2015	
FY2014	
FY2013	
FY2012	
FY2011	
FY2010	87.0%
FY2009	91.0%
FY2008	91.0%
FY2007	87.0%
FY2006	

Story Behind The Curve

Actions

While school readiness has been improving over the past 10 years, it is important to note that several factors contribute to the lack of readiness, such as:

- lack of education among family members
- low family income
- lack of family supports
- poor health care

Partners

Actions

Parents/families
 Child care providers
 Teachers
 Institutions that certify child care providers

What Works

Actions

Investing early in child care and development

Strategy

Actions

We will engage child care providers in having standardized tools and engage parents to be more proactive in reading to their kids.

Program Present View



Family Services: Child Protective Services



Print

What We Do

Who We Serve

How We Impact

Edit

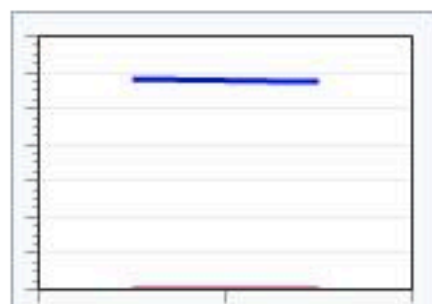
We are a specialized social service for children believed to be neglected or abused and for their parents or other adults having permanent or temporary care, custody, or parental responsibility, or to household or family members, to decrease the risk of continuing physical, sexual or mental abuse or neglect. In instances where a child can be safely protected in his or her own home through the provision of services or other assistance to the child's family, such an alternative is preferable to foster care placement.



Performance Measures

Select

Family Services: How much: # of child abuse cases



Jan 09

115

Story Behind the Curve

Early detection and prevention have been an important part of the improved curve.

1

Family Services: How well: % of cases responded to within 24 hours



Jan 09

99.0%

Story Behind the Curve

Studies have shown that a 24 hour response time or child abuse cases is important for resolving the situation

1

Family Services: Better off: % of cases with repeat abuse and neglect



Jan 09

51.0%

Story Behind the Curve

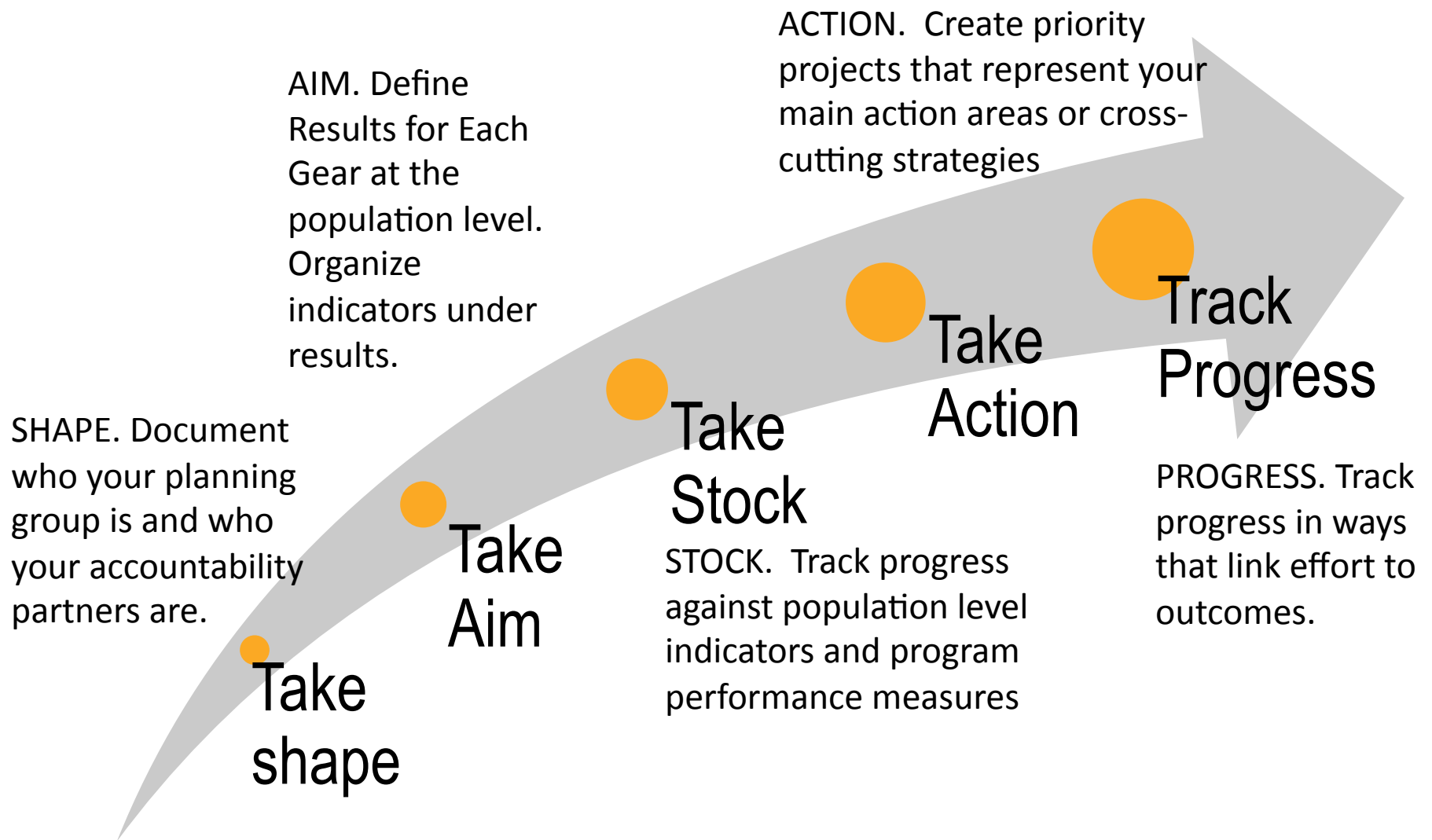
Story Behind the Curve: The poor economy adds to household stresses Required training after first offense

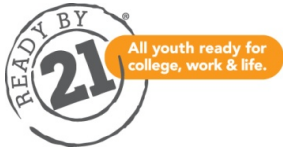
1

Comments/Projects



RBA Scorecard Helps w/ Rb21 Planning





Want to Learn More?

- **Ready by 21 Standards and Strategies**
- **Ready by 21 Partnership Tools, Trainings, TA**
- **Ready by 21 RBA Planning Process**
- **RBA Planning – Tools, Trainings, Facilitations**
- **RBA Results Scorecard**
- **Rb21 Results Scorecard (to come)**
- ian@forumfyi.org adam@resultsleadership.org

Questions



All youth ready for
college, work & life.

the
forum
FOR YOUTH INVESTMENT

The logo for Results Leadership Group features a graphic of three red, upward-pointing triangles of increasing size, creating a sense of growth and progress.

Results
Leadership
Group®

Thank you!

